



·LEGENDEX· 4X4EXTREME SERIES BULLBAR X-1

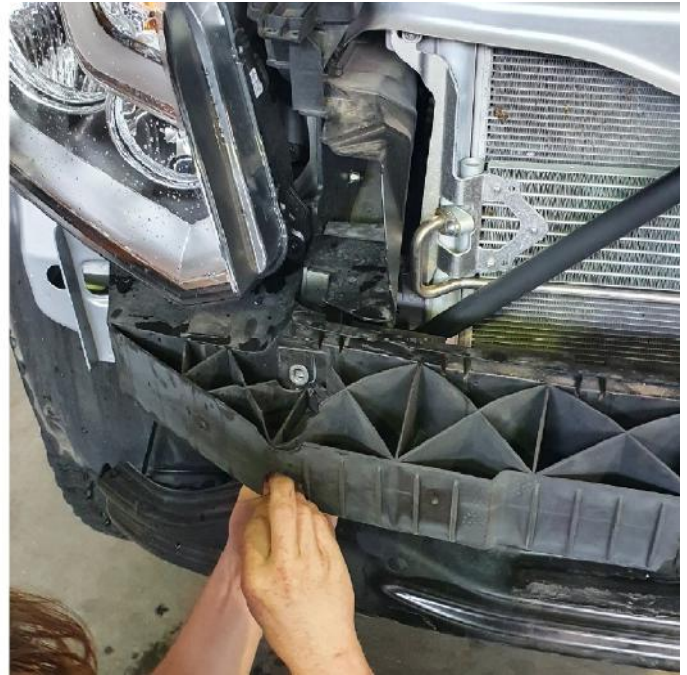
Fitting instructions for Amarok

See Variants section at bottom if your amarok is slightly different.

Note: Bullbar also complied for body lift, redrill chassis holes higher to suit body lift

- 1) Unwrap the bulbar carefully to avoid sharp objects damaging paint, its best the lay bulbar on a stand or soft surface. Unbolt the cradle from the bulbar and also take out the fog light brackets.
- 2) Remove factory grille and bumper from the car, several screws and bolts under the wheel arches and under the front end of the car. The bumper is clipped into the grille so after undoing the top bolts you will need to pull sharply on the grille towards you to get it to unclip. 2 bolts are behind the number plate. You can use pick tool or flat head to pry up the bumper from its securing points along area grill connected to.

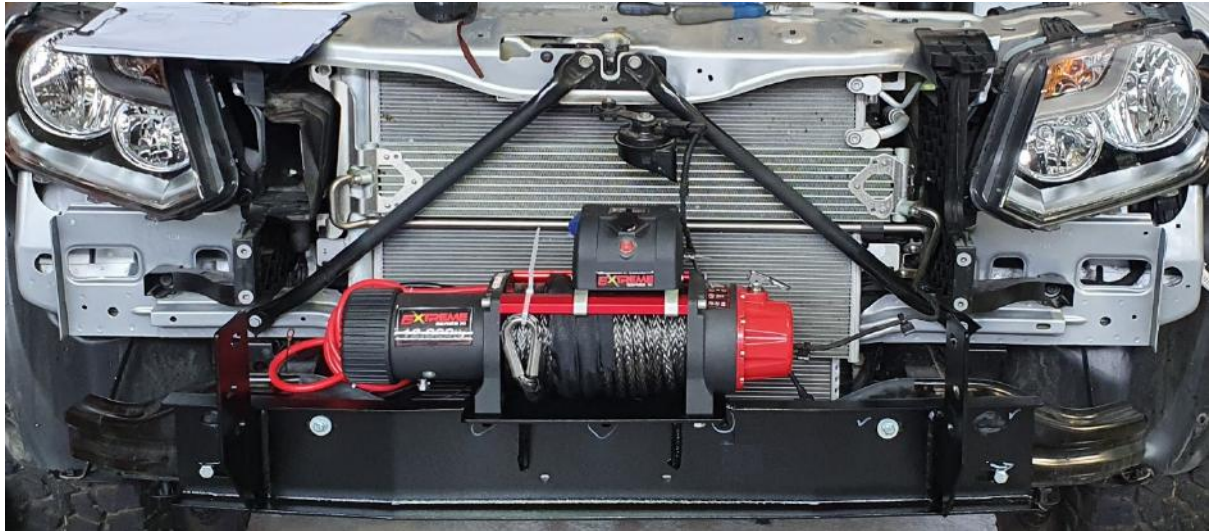




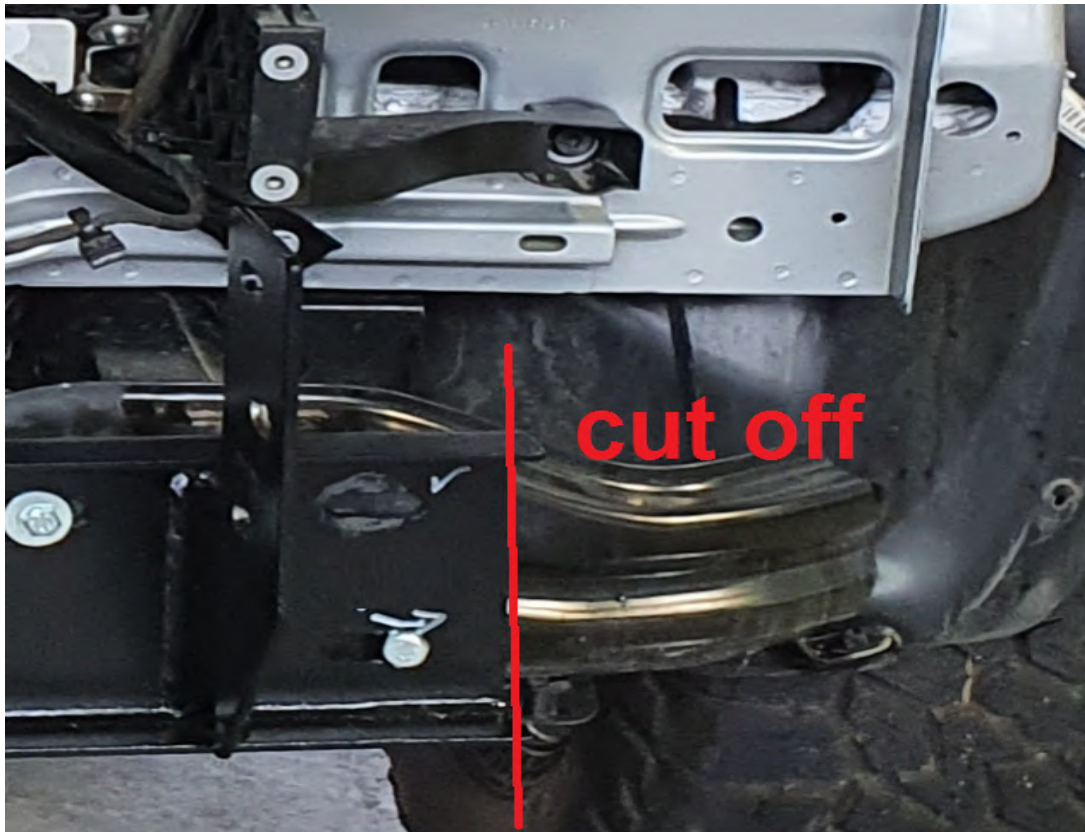
- 3) Once loose or partially removed disconnect the park sensors if you have them, unclip the air sensor from the grill by pulling it off or using pliers. You will also have to unclip some of the wiring from the plastic bumper/grill.
- 4) Remove factory bash plate so you can access behind the factory support later on.
- 5) Remove the 2 clips holding the plastic air dam and drill plastic hole out to suit bolts EG 10mm



- 6) Now install the cradle centred with the 2 outer bolts on each side, you can use the 3 plastic tabs on the car in front of the radiator as centre link. The cradle is approx. 1100mm long & centre point is approx. 550mm



- 7) Once centred mark and drill out securing points under winch plate. Tighten lower bolts first in order to align cradle vertically.
- 8) Cut off remaining end sections which pass the cradle on both sides.



- 9) Now its time to install the bulbar. We recommend you bolt on cradle finger tight enough so you can move the cradle left to right if you need too. Use 10-15mm foam (clark rubber) or cardboard of equal depth and tape to the bulbar where bar meets guards, use a tape which does not affect the paint. The way in which you tighten the cradle may affect alignment. Since the amarok mounting chassis is not even surface if you tighten bolts before trying to semi align the bar it may pull bulbar forward or back etc.

NOTE: We install bullbar FORWARD of the lights approx 2-3mm to avoid any clash and leave 20-25mm gap between bar and gaurds. if you do not like gap please purchase 20mm pinch weld side bulb from our online store or clark rubber. image shows pinch weld under headlights as well. We recommend pinch weld between bar and side gaurds only.



- 10) Install centre bolts through fog light opening first which allow you to line up bulbar better. Once aligned in place now install remaining bolts.

- 11) Reinstall the park sensors and the air sensor. Air sensor clips onto metal. Park sensors reuse factory plastic surrounds. Park sensors reuse existing plastic from plastic bumper, heat and pry off. Lower middle sensor inserts cut down to suit max height of metal bulbar lip. Either glue or double side tape or both. Ensure correct orientation. If your model has round sensor paint sensor backing to match bar



**paint to match bar
colour before
glue in**



- 12) Cut the guards to suit profile of the bulbar and secure with cable tie to original metal support.



- 13) Connect up fog lights. Reinstall factory bash plate.

Variants

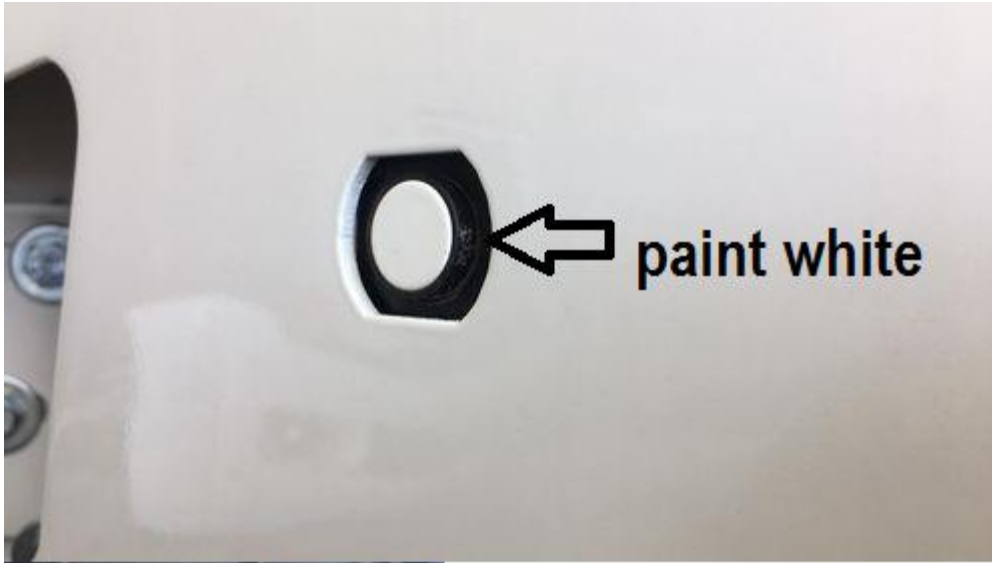
- 1) Some amaroks may have clip in bumper air sensor, if so cable tie to radiator support.
- 2) Amarok with round sensor and no rectangular housing paint the sensor backing same colour as bar to suit



- 3) If you have metal bash plate simple drill through and mount bolts on the angle, ensure you mount bolt close as far in as possible.



- 4) If your grill is moulded to the bumper you will need to air saw, Stanley knife or grind it away from the bumper, clean up and install in place with cable tie back to radiator support.



paint to match bar
colour before
glue in